

ENAMEL PAINTS

YACHT ENAMELS



Epifanes Bootlak Yacht Enamel Colour brilliance, superior covering and flowing properties are the hallmarks of these high-gloss enamels. The finest components possible give a hard protective finish. The preferred paint for many of the world's finest yachts, giving long-lasting protection in any climate. Suitable for wood, steel, glass fibre and steel yachts. Apply

primer, then apply three coats of enamel. Available in the colours below. Covers 15 m² per litre.

Thinners: Epifanes Brush Thinner [page 51] or spray thinner.

| Epifanes Bootlak Enamel | size | code | price |
|-------------------------|--------|------------|--------|
| White | 750 ml | PAT9927WIT | £20.25 |
| Colour | 750 ml | PAT9927XXX | £20.25 |
| White | 2 L | PAT9922WIT | £38.30 |
| Colour* | 2 L | PAT9922XXX | £38.30 |

XXX Substitute for colour reference in chart



Epifanes Mono-Urethane A hard, one-component, air drying high-gloss finish paint based on urethane-alkyd resins. Long-lasting durability on wood, steel, aluminium and fibreglass. Only available in the colours marked with a †. Covers 15 m² per litre. Please allow a few days for these products – they are not all held in stock.

Visit arthurbeale.co.uk for more marine products

| Epifanes Mono-urethane | size | code | price |
|------------------------|--------|----------|--------|
| White | 750 ml | PAT31WIT | £30.24 |
| Colour | 750 ml | PAT31XXX | £31.78 |

XXX Substitute for colour reference in chart

ACRYLIC ENAMELS



Rosco Colorcoat is a durable waterborne acrylic enamel modified to provide superior adhesion and abrasion resistance. It can be used on most interior and exterior surfaces where maximum durability is required. Not suitable on soft or flexible substrates. Flat Black Colorcoat is widely used by theatre engineering shops as a safer alternative to priming steel with

etch primer. During Flints sampling we were highly impressed with Colorcoat's adhesion to aluminium. We would recommend this product as a substitute to two-component primers for painting aluminium truss and lighting bars especially for painters keen to avoid solvent-laden paints. It is water-based, so brush cleaning is easy. Rosco recommend Colorcoat for use on floors and scenery which endure heavy handling. Clear Colorcoat can also be used as a heavy-duty sealer over all Rosco paints. Covers 7 - 8.5 m² per litre. See page 30 for Metal Primers.

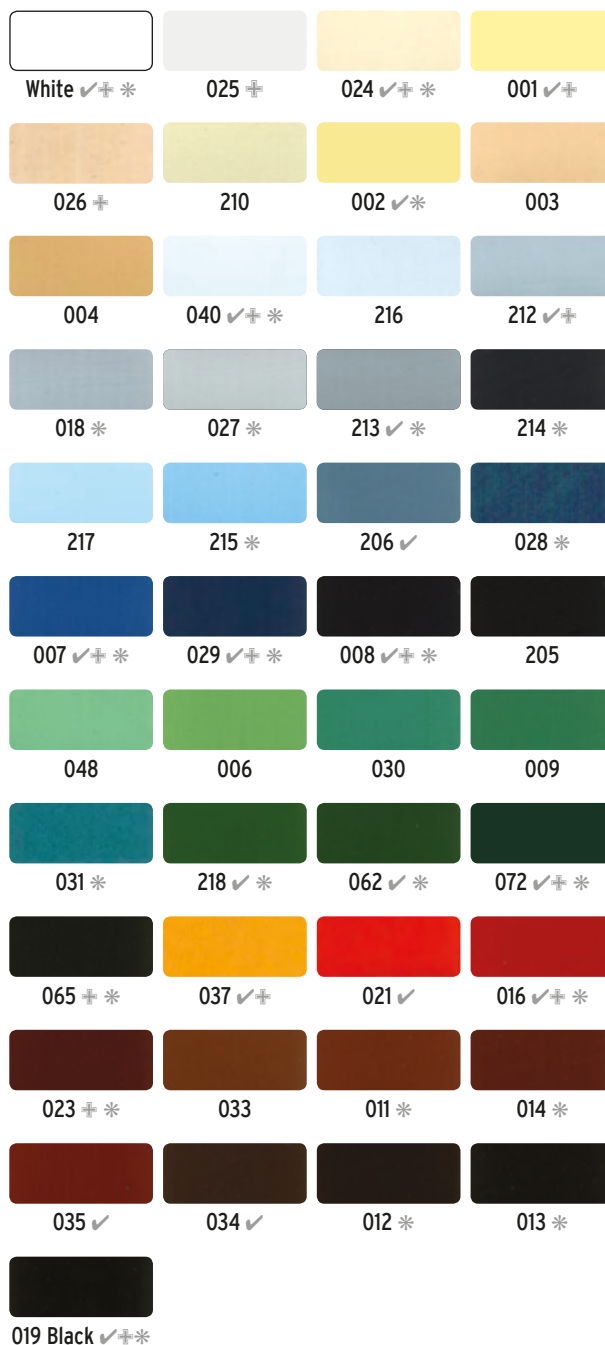
| Colorcoat | size | code | price |
|-------------|--------|----------|--------|
| Clear Gloss | 3.79 L | ROS35620 | £38.00 |
| Clear Satin | 3.79 L | ROS35621 | £38.00 |
| Black Gloss | 3.79 L | ROS35634 | £38.00 |
| Black Flat | 3.79 L | ROS35635 | £38.00 |

KEY

✓ Held in stock as enamel

* Only the colours with this symbol are available in 2 L

† Available as mono-urethane



Throughout the catalogue you will see the marine symbol which denotes which products will withstand the harsh marine environment. The enamels on this page would, of course, be equally suitable for the highest finish on architectural woodwork or furniture.



Unfortunately we are unable to supply Breakthrough any more, but we are on the hunt to find another supplier. Please call us to see if we can offer an alternative, or keep an eye on the website!