

# HAUSSMANN PRODUCTS

## A. HAUSSMANN GMBF



**A. Haussmann GMBF** have been producing specialist paints and textures for Germany's theatres for over 70 years. That's all they do so they know their business really well. Flints have sold products made by Haussmann's for over thirty years but we have recently been working more closely with them and have expanded the range that we stock to become Haussmann's exclusive UK dealer. We appreciate the reliability and performance of their products and we hope you will too. By working closely with the Haussmann team we are able to pass on feedback from you and keep you informed with up to date data and new products. We also have regular and frequent deliveries to meet your demands. Throughout the catalogue you will find products using their HATO® brand trade mark but for convenience we have grouped a large selection of their products in this dedicated section of the catalogue. Why not give them a try?

### HATO®STAGE LACQUER



**HATO®Stage** This new synthetic resin based paint from Haussmann leaves a very impressive black scratch resistant finish. It is designed to be used on newly laid stage floors or new rostra tops as a finish which will be much more durable than can be expected from waterborne paints. It is available in gloss and ultra matt finishes. It is the perfect paint to specify for new build theatre stages. The product acts as the primer and top coat. One coat should be applied at 100-130 g/m<sup>2</sup> then allowed to dry for 24 hours before sanding with 150 grit and a further coat applied. Although dust dry in 6 hours the paint continues to harden and become more robust over 9-10 days. If using the Ultra Matt HATO®Stage consider using HATO®Stage Cleaner to maintain the matt finish.

**SPECIFICATION:** Touch dry in 6 hours, full cure in 24 hours. Leave full 24 hours before overcoating. Consumption: 8-10 m<sup>2</sup>/L. Technical Data Sheets can be accessed from the 'downloads' section of our website.

HATO®Stage	size	code	price
Ultra Matt Black	5 L	PAT2314405	£122.70
Ultra Matt Black	10 L	PAT2314410	£191.29
Gloss Black	5 L	PAT2314505	£122.70
Gloss Black	10 L	PAT2314510	£191.29

### HATO®STAGE CLEANER



**HATO®Stage Cleaner** This cleaner has been specially developed for use with stages painted with HATO®Stage Paints. In particular it helps maintain the matt surface which can be spoiled when using conventional cleaning products.

HATO®Stage Cleaner	code	price
5 L	PAT23146	£36.75

## PROJECTION PAINT



Photo courtesy of Studio Hamburg – the back image is projected onto Black HATO®Screen.



ABTT Widget  
of the Year  
2016!

Black\*  
projection  
paint!



### HATO®Screen Black or White Projection Paint

We were very impressed when we saw painted surfaces burst into life with colour-faithful projections. Sounds extravagant but this HATO®Screen Projection Paint turns wood, concrete and, as it's flexible, even textiles into a surface that will reproduce a very good

image with uniform brightness. Excellent luminance – sends more light back than you throw into it – and image reproduction when seen from almost any angle. Preparation is everything: if brushed on it will show the grain so for best results spray first with a primer then apply by spraying. People were so impressed when we demonstrated this at the ABTT in 2016 - they quite often thought our screen was an LCD display!

\*NB: The paint's metallic sheen makes it appear more dark anthracite rather than pitch black when put next to black surfaces. Water-based. For large areas we can also supply 5 L and 12.5 L sizes, call us to discuss your project. Covers 6-8 m<sup>2</sup> per litre.

HATO®Screen	size	code	1 L
Black [appears dark grey]	1 L	PAT24002	£59.90
Black [appears dark grey]	5 L	PAT24003	£260.00
White	1 L	PAT24001	£59.90
White	5 L	PAT24004	£260.00

### HATO®TRUSS PAINT



Silk Matt

**HATO®Truss** This fast-drying, water-based paint has certainly impressed our projects and workshops teams. The satin-matt finish is particularly close to that of Doughty Clamps, and would blend in well. Excellent adherence to zinc, aluminium, copper, and brass, making it ideal for overcoating aluminium and steel trusses and beams. The finish is resistant to scuffs and will keep scenery and truss rigs looking smart. It will also provide strong anti-corrosive protection. We've tried it out by brushing on to aluminium

tube with, and without, preparation work and have been impressed by results. We think it would also spray well. 2 coats recommended.

**SPECIFICATION:** Touch dry after 1 hour, Full cure in 6 hours. Coverage: approx 8 m<sup>2</sup>/L

HATO®Truss	code	price
Black Gloss 1 L	PAT260101	£13.75
Black Gloss 5 L	PAT260105	£49.95
Black Silk Matt 1 L	PAT260111	£13.75
Black Silk Matt 5 L	PAT260115	£49.95

## HATO®PROTECT FIRE PROTECTION COATING



**HATO®Protect** Water-based fire prevention coating primer for timber structures. Certified to Euroclass C, DIN EN 13501-1. Although designed for use on timber [and only certified for that use], we tried coating a block of polystyrene and were thoroughly impressed; when a flame was applied to the block, the paint proved impervious even when the polystyrene melted behind it, we were left with a shell of paint.

We stock this in a light neutral grey - easy to overcoat - it's also available in a dark anthracite grey to order. To maintain the certification it must be overcoated with HATO®Design Paint [see page 16], but we suggest that any standard theatre paint would suffice. As always, certification is only valid on the actual sample tested and is otherwise a guideline - see our guidance on Flame Retardants from page 58.

SPECIFICATION: Apply by brush, roller or spray gun. Recommend 2 coats. Thin with water: max 3% dilution. Coverage: 225 g/m<sup>2</sup> per coat.

HATO®Protect	size	code	price
Light Grey	5 kg	PAT1530005	£84.00
Light Grey	12.5 kg	PAT1530125	£175.00

## FOAMCOAT HARD COATINGS

**Textures for Styrofoam and Polystyrene** Versatile water-based fibre-reinforced coatings for Styrofoam and polystyrene. Application with a trowel is best but it can be diluted with water up to 5% to be applied with a brush; or up to 15% to be applied using Airless Spray Equipment [see page 80]. Clean immediately after use with water. Can be tinted using up to 8% Rosco Supersaturated Paint [page 2]. Very strong.



**Foamcoat** A good value version of the coating. An excellent choice if you have to cover a large area.

Consumption: Undiluted allow around 1 - 1.8 kg per m<sup>2</sup>.

- ✓ Economical



**Foamcoat Light** This coating uses a new ultra-lightweight mineral extender to reduce weight. When applied to Styrofoam and polystyrene it only slightly increases their weight making it excellent for tours and flown pieces.

Consumption: Undiluted allow around 0.6 - 1.2 kg per m<sup>2</sup>.

- ✓ Good for touring
- ✓ Flown pieces

Spot the difference. The top sample board has been covered with Foamcoat, the board below with Foamcoat Light.

Foamcoat	size	code	price
Off-white	18 kg [approx 10 L]	PAT1075	£105.00

Foamcoat Light	size	code	price
Off-white	12 kg [approx 12 L]	PAT1080	£119.00

See page 54 for other textures and fillers

## HATO®SAFE



Easy to add colour with water-based paints



Hard foam coated with HATO®Safe and a layer of Quadraxial Fabric for reinforcement.

**HATO®Safe** This simple non-combustible [EN13501] coating system from Haussmann is great for propmakers on the go who need to reinforce small props. Easy to use, simply add water to the powdery base [37:100], mix thoroughly and apply to the surface [styrofoam, wood, hard-foam boards and plastics]. The result is a ceramic-like surface which is smooth and inflexible. We recommend using quadraxial fabric to reinforce, it can be susceptible to cracks when point pressure is applied. Water-based paint can be added in small quantities to the mixture before application to introduce a colour. Normal colour: Off-White. See also Jesmonite [page 99] SPECIFICATION: Ratio Water: HATO®Safe Powder - 37:100. Open time of 60 minutes, Full cure in 24 hours. Apply by brush, or palette knife.

HATO®Safe	code	price
1 kg	PAT1090001	£15.00
5 kg	PAT1090005	£59.00

## HATO®GESSO



**HATO®Gesso** Highly flexible water-based primer for textiles, canvases, wood and sculptures. We think this could be an excellent choice for prop makers and costumiers especially those using sheet materials such as Worbla [page 84] in our propmakers materials section [page 81 - 86]. Thin with water. Apply by brush, roller or spray gun.

SPECIFICATION: Coverage: 10 m<sup>2</sup>/L

HATO®Gesso	code	price
1 Litre	PAT11001	£13.25

## RUBBER MILK



Nose in natural colour, and pink piece coloured with HATO®Tex.

**Rubber Milk** A mouldable stabilised form of natural rubber, the resulting casts are highly flexible and naturally have a slightly yellowish-milky colour. The rubber milk can be tinted by adding up to 5% of HATO®Tex Paint [available to order, ask us for a swatch card]. Only cast into plaster moulds that are thoroughly dry. Please note, the rubber milk will shrink by 5-10%, so

factor this into the design of the mould. Rubber Milk is quite thin already and easy to pour but if it needs to be diluted, please use a 10% Ammonia Solution. See also Liquid Latex page 90.

SPECIFICATION: Pour into the mould, and leave for about 15-20 minutes, until the desired wall thickness has been reached. Demould after 1/2-2 hours. Full cure after 3-12 hours depending on temperature. Higher temperatures can reduce the cure time, but temperatures should not exceed 45°C when in the mould, and 80°C once demoulded.

Rubber Milk	code	price
1 kg	PAT1062	£14.80



## HATO@NANO TEXTILE PROTECTOR

NEW



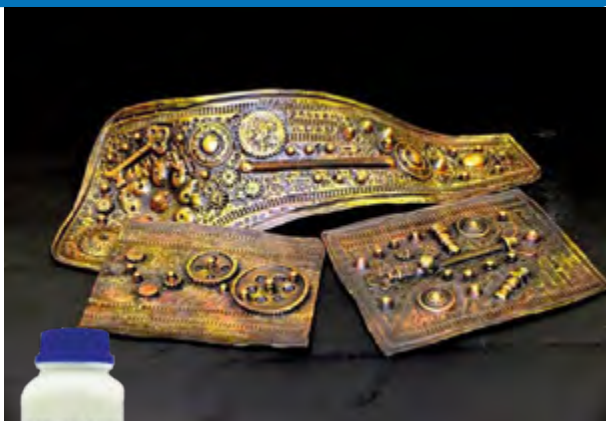
### HATO@Nano Textile Protector

HATO@Nano Textile Protector has been specially developed to seal fabrics and paintings with a self-cleaning, lotus effect. Various stage materials, paintings, furniture, as well as natural and synthetic clothing and costumes can be protected with HATO@Nano Textile Protector. It has been tested with oil and water-based substances such as mustard, ketchup, and wine. We tested it with Pigs Might Fly Blood [page 89] and it rolled right off. Garments treated with HATO@Nano can survive several washes [up to 30° C, max. 4 cycles before re-application]. Apply by brush, low pressure, or airless sprayer. For small surfaces HATO@Nano Textile Protector can be applied with a hand-held spray gun. We recommend testing the product on a small section of the fabric before use.

SPECIFICATION: Consumption: approx. 120 - 150ml / m<sup>2</sup>.

HATO@Nano	code	price
1 litre	PAT15601	£23.00
5 litres	PAT15605	£97.75

## HATO@VIT



NEW

**HATO@Vit K50** The HATO@Vit K50 is a mouldable filling emulsion for sculptures, relief, props, candelabras, and masks. It makes a great material for prop making because it's unbreakable, keeps its shape, can be nailed, and glued. Perfect for making terracotta-style pots and vases that won't smash!

Fresh mouldings will show sharp contours and require no reworking. Ready to use straight from the pot, there is no loss of material in preparation. HATO@Vit mouldings can be over-coated with elastic paints when dry [standard scenic acrylics should be fine]. It should be borne in mind that HATO@Vit will shrink by 5 - 10%. If an accurate fit is required, the mouldings must be made correspondingly oversize. You can go on to make further castings of the HATO@Vit moulding but it is recommended that only plaster of Paris is used. Hausmann recommend colouring HATO@Vit through the addition of up to 5% of HATO@Tex Paint [available to order, call us for a details and a swatch card]. We have also successfully coloured HATO@Vit with Rosco Supersaturated Paint [page 2] prior to pouring into a mould with no adverse effects.

HATO@Vit K 50	code	price
1 kg	PAT105001	£12.90
5 kg	PAT105005	£49.95

## HATO@RUST EFFECT



Avoid discolouring other paints on the piece



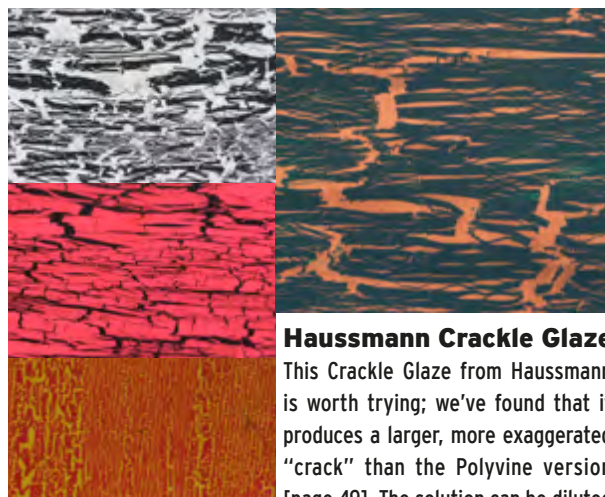
Objects rusted with the HATO@Rust system; above a piece of fibre rope, below a galvanised Key Clamp.

**HATO@Rust** Our favourite effect! The benefit of this system over the classic iron-fillings-and-vinegar method is that the activator should not interfere with other paints. Apply the primer to the surface of the object, allow to dry for 14 hours before applying the activator. We offer a choice of 2 activators; the liquid form—can give the user more control, as the effect can be built up gradually, but has a low viscosity and will drip off objects; this can of course help add to an effect on a piece of scenery, but it's worth noting [takes a few hours to develop rust effect]—and the gel form—ideal for creating a strong rust effect quickly [starts to work in minutes], and we recommend it for working on 3-D objects/vertical surfaces it will not drip off. We recommend sealing with the Rust Effect Varnish, as without it, the rust can rub onto clothes and skin, causing marks. The Rust Effect Varnish barely altered the appearance of the rust whereas conventional glazes can tend to spoil the effect.

SPECIFICATION: Primer Coverage: 4 m<sup>2</sup>/kg. Liquid Activator Coverage: 8-10 m<sup>2</sup>/L. Gel Activator Coverage: 8-10 m<sup>2</sup>/L. Varnish Coverage: 8-10 m<sup>2</sup>/L.

HATO@Rust Effect System	size	code	price
HATO@Rust Primer	2.5 kg	PAT233658	£35.00
Liquid Activator	1 L	PAT233662	£5.75
Gel Activator	1 L	PAT233662G	£7.00
Varnish	1 L	PAT233660	£9.35

## HAUSSMANN'S CRACKLE GLAZE



### Hausmann Crackle Glaze

This Crackle Glaze from Hausmann is worth trying; we've found that it produces a larger, more exaggerated "crack" than the Polyvine version [page 49]. The solution can be diluted

by water, and in doing so will produce a finer crackle effect, the more diluted, and thinner the application, the finer the cracks. Ensure the base layer is completely dry before applying, wait for it to dry, but still be tacky, apply the top layer of paint [ensuring all brush strokes are in the same direction] which will crack immediately to reveal the base colour. We had success in testing this with HATO@ Silk [page 21] as well as typical paints found in the paintshop [from page 2], so it can be used on fabrics as well as solid surfaces.

SPECIFICATION: Coverage 12 m<sup>2</sup>/L.

Hausmann Crackle Glaze	code	price
1 litre	PAT2334921	£10.50
5 litre	PAT2334925	£45.35

## HATO®DESIGN - SCENIC COLOURS



Ochre  
PAT228011



Deep Black  
PAT225541



Milori Blue  
PAT223091



Ultramarine Blue  
PAT223071



White  
PAT221001



Green Raw Umber  
PAT2280511



Velvet Black  
PAT225531



Pthalo Blue  
PAT223101



Cobalt Blue  
PAT223051



Lemon  
PAT221011



Raw Sienna  
PAT228021



Velvet Brown  
PAT225111



Navy Blue  
PAT223111



Turquoise Blue  
PAT223011



Dark Chrome Yellow  
PAT22103



Raw Umber  
PAT228031



Sepia Bronze Brown  
PAT22506



Sky Blue  
PAT223121



Red Violet  
PAT222251



Straw Yellow  
PAT221051



Burnt Sienna  
PAT228041



Bronze Green  
PAT224141



May Green  
PAT224011



Violet  
PAT222151



True Yellow  
PAT221061



Burnt Umber  
PAT228061



Russian Blue Green  
PAT224131



Chrome Green  
PAT224021



Telemagenta  
PAT222111



True Orange  
PAT221511



Satin Glaze  
PAT228041



Hunter Green  
PAT224121



Pthalo Green  
PAT224031



Light Rose  
PAT222101



Brown Orange  
PAT221521



Orange Brown  
PAT228091



Grass Green  
PAT224111



Cinnabar Green  
PAT224041



Deep Maroon  
PAT222091



True Red  
PAT222011



Oxide Red  
PAT228121



Leaf Green  
PAT224101



Sea Green  
PAT224051



Madder  
PAT222061



Brilliant Red  
PAT222021



Cigar Brown  
PAT228141



Imperial Green  
PAT224091



True Green  
PAT224061



Spectrum Red  
PAT222051



Carmine Red  
PAT222031



Caput Mortum  
PAT228131



Blue Green  
PAT224081



Emerald Green  
PAT224071

## HATO®DESIGN - KEYING COLOURS



Blue Screen  
PAT223081



Blue Box  
PAT22330



Ultimatte Blue  
PAT223501



Chroma Key Blue  
PAT223511



Green Screen  
PAT224001



Green Box  
PAT224151



Ultimatte Green  
PAT224201



The cloth above of Joseph Gandy's 'Rotunda at Sir John Soane's Bank of England' was painted for Lucerne Theatre's production of Don Juan using HATO@Design paints.

**NEW**

**HATO@Design** This fantastic range of colours is the latest paint range from Haussmann. Offering a huge range of colours, this high-quality acrylic paint has a smooth matt finish. We found in our testing that most of the colours thinned well and could be used as a wash without losing consistency of colour. The Velvet Black is especially impressive for a super-matt black finish, but the deep black thins better to make a wash. All the colours mix well without muddying. Designed to be used straight out of the pot, it will cover 6 - 8 m<sup>2</sup> per litre. Haussmann recommend that you thin with water to a maximum of 3:1, but in testing we found that we could push the dilution to up to 20:1 creating a very thin wash. One of the biggest benefits of this range of paints is the consistent pricing - with every colour priced the same it makes costing jobs a lot easier!

- ✓ Excellent value and consistent pricing
- ✓ Brilliant, wide range of colours
- ✓ Good quality - as you'd expect from Haussmann
- ✓ Best for school productions and fringe theatre
- ✓ Offers better value when purchasing a wider range of colours than other paint ranges

We can supply larger pots to order - please call for further details.

HATO@Design	1 L	5+
PAT22XXX1	£18.50	£16.65



This beautiful colour wheel was created by Lydia from our trade counter to test out the HATO@Design paints. Did you know that all our products are thoroughly tested to check they are up-to-scratch before we'll list them?



Why not hire our new UV Floodlight [page 360] to check your progress?

Invisible Blue PAT343185	Invisible White Light PAT343475
Orange PAT343925	Green PAT343935
Magenta PAT343965	Yellow PAT343975
Pink PAT343945	Red PAT343985

**Invisible Ultraviolet Paint** Produces high quality fluorescent effects which are invisible in normal daylight. Under UV light, however, they burst forth from obscurity with radiantly luminescent colours – their words, not mine! They can be applied to many different surfaces such as fabric or wood by brush, roll or spray. A Test Kit is available with one of all the colours. The drying time depends on the prevailing temperature and humidity. At 20°C, the setting process is largely completed after approximately 24 hours.

**Note about UV Lights** The Non-LED UV Floodlight [page 328] is compatible with Invisible UV Paint, producing a good effect with accurate colours with one exception – pink is actually a bit closer to lilac than pink, having a slightly bluey tinge. The LED UV Worklight [page 328] does not produce accurate results with this range and is not recommended for use with them.

Invisible Ultraviolet Paint	code	500 ml	5+
Invisible Blue	PAT343185	£48.00	£42.00
Invisible White Light	PAT343475	£48.00	£42.00
Orange	PAT343925	£48.00	£42.00
Green	PAT343935	£48.00	£42.00
Pink	PAT343945	£48.00	£42.00
Magenta	PAT343965	£48.00	£42.00
Yellow	PAT343975	£48.00	£42.00
Red	PAT343985	£48.00	£42.00
Invisible UV Paints Test Kit	code	price	
8 x 40 ml pots	PAT34300	£49.95	

See also Glow in the Dark on pages 23 and 42.

**HAUSSMANN LEATHER PAINT**



**Haussmann Leather Paint** This water-based paint can be applied direct to leather, artificial leathers, PVC films and fabrics. A useful product for any propmaker or costumier - perfect for detailed leather work, or to simply change the colour of a pair of shoes on set or the runway. It works especially well with soft ballet slippers providing lasting results. Prepare the leather surface thoroughly with White Spirit [page 53] first to degrease. Semi-matt finish.

SPECIFICATION: Coverage: 6-7 m<sup>2</sup>/L. To reduce the intensity of the colour, thin using the colourless paint.

**HATO®SPRILA**



**HATO®Sprila** Designed for use on silks with a sheen, these water-based paints will maintain the material's lustre, rather than mattifying it down. When used straight out of the pot, HATO®Sprila will not bleed at all. It has a very thin consistency which makes it suitable to spray as well as paint by brush. To reduce the intensity of the colour, dilute with the colourless HATO®Sprila [we tried water, but found it started to bleed heavily making it impossible to achieve a clean line]. When using on FR fabrics [page 117] ensure the fabric has been washed and completely dried before applying the HATO®Sprila, as the salts from the Flame Retardant can interact negatively with the paints. Always do a test first. Once dry, the finished article can be washed on a gentle cycle with a mild detergent [30°C] without affecting the finish. We think this product would work well for costumiers and window dressers who need to maintain the finish of the fabric they are working with, without affecting the fabric's hand.

SPECIFICATION: Coverage 6-8 m<sup>2</sup>/L Dilute with Colourless.  
See also HATO®Silk on page 21.

Leather Paint	code	500 ml
Lemon *	PAT51801	£19.95
Yellow *	PAT51802	£19.95
Ochre *	PAT51803	£19.95
Orange *	PAT51804	£19.95
Carmine Red *	PAT51805	£19.95
Wine Red *	PAT51806	£19.95
Telemagenta *	PAT51807	£19.95
Light Violet	PAT51808	£19.95
Violet *	PAT51809	£19.95
Light Blue	PAT51810	£19.95
Steel Blue *	PAT51811	£19.95
Ultramarine Blue *	PAT51812	£19.95
Light Green *	PAT51813	£19.95
Sap Green *	PAT51814	£19.95
Leaf Green *	PAT51815	£19.95
Brown *	PAT51816	£19.95
Black *	PAT51820	£19.95
White *	PAT51821	£19.95
Colourless	PAT51800	£19.95

HATO®Sprila Paint	code	1 litre
Lemon	PAT17301	£29.95
Yellow	PAT17302	£29.95
Ochre	PAT17303	£29.95
Orange	PAT17304	£29.95
Carmine Red	PAT17305	£29.95
Bordeaux Red	PAT17306	£29.95
Violet	PAT17308	£29.95
Steel Blue	PAT17310	£29.95
Ultramarine Blue	PAT17311	£29.95
Light Green	PAT17312	£29.95
Sap Green	PAT17313	£29.95
Leaf Green	PAT17314	£29.95
Bistre	PAT17315	£29.95
Sepia	PAT17316	£29.95
Black	PAT17317	£29.95
White	PAT17318	£29.95
Colourless	PAT17320	£29.95

Leather Paint Starter Kit	code	unit
16 x 50 ml pots [included colours marked *]	PAT1899	£89.00

HATO®Sprila Paint Starter Kit	code	1 litre
16 x 50 ml pots [doesn't include colourless]	PAT17300	£89.00