

# MARINE PAINTS



Flints have supplied marine paints for many years mainly through our marine website - [flintsmarine.co.uk](http://flintsmarine.co.uk). It is our intention to bring out a dedicated marine catalogue but in the meantime we have decided to list some of the marine paints on this page. Throughout the catalogue you will see the marine symbol which denotes products which will withstand the harsh marine environment. The enamels on this page would, of course, be equally suitable for the highest quality finish on household woodwork or furniture.

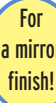
## FINEST MARINE ENAMELS



**Epifanes Bootlak Yacht Enamel** Colour brilliance, superior covering and flowing properties are the hallmarks of these high gloss enamels. The finest components possible give a hard protective finish. The preferred paint for many of the world's finest



yachts, giving long lasting protection in any climate. Suitable for wood, glass fibre and steel yachts. Apply primer [see page 1.19], fill as necessary with Epifanes Combi Filler, then apply three coats of enamel.



Available in the colours below. Coverage 15m<sup>2</sup>/L Thinners: Epifanes Brush Thinner [or spray thinner]- see p 1.34.

Epifanes Enamel Paint	size	code	price
White	750ml	PAT9927WIT	£16.80
Colour	750ml	PAT992XXX	£16.80
White	2L	PAT9922WIT	£31.50
Colour*	2L	PAT9922XXX	£31.50

**Epifanes Mono-urethane** A hard, one-component, air drying high gloss paint based on urethane-alkyd resins. Long lasting durability and weather protection for wood, steel, aluminium and fibreglass. Only available in the colours shown with MU. Coverage 15m<sup>2</sup>per litre. Thinners as above.

Mono-urethane	size	code	price
White	750ml	PAT31WIT	£26.95
Colour	750ml	PAT31XXX	£26.95

Not just for boats!

✓ - held in stock    + - available as mono-urethane    \* - available in 2L size

Please allow a few days for these products - they are not all held in stock

WIT +✓	25 +	24 +✓	1 +	26 +
210	2 ✓	3	4	40 +✓
216	212 +✓	18	27	213 ✓*
214	217	215	206 ✓	28
7 +✓*	29 +✓*	8 +✓*	205	48
6	30	9	31	218 ✓
62 ✓*	72 +✓*	65 +	37 +✓	21 ✓
16 +✓*	23 +	33	11	14
35 ✓	34 ✓	12	13	19 Black +✓*

Due to the limitations of the printing process used in this catalogue, the colour chart should only be used as a rough guide to the range. For accurate colour matching please ask for Epifanes Colour Card.

## EGGSHELL ENAMELS



**Epifanes Eggshell White** This paint is ideal for cabin interiors. It provides a low reflectance satin finish which is easy to clean and restful on the eye. Highly recommended.



Epifanes Eggshell Paint	code	750ml
White	PAT991	£24.80

## BILGE PAINT



**Epifanes Bilge Paint** A protecting paint for use in bilge spaces, engine rooms, lockers etc where a tough paint system is required. Can be applied over most substrates with the appropriate one component primer system. Coverage 7-8m<sup>2</sup> per 750ml.

Bilge Paint	code	750ml	2L
White	PAT995X	£13.00	£30.45
Grey	PAT996X	£13.00	£30.45
		[ - ]	[ 2 ]

## MARINE FILLERS



**Epifanes Combi Filler** A single component filler for levelling small irregularities for one component paint systems above the waterline.

**Epifanes Epoxy Filler** A two component filler for use above and below the waterline. For other fillers see page 1.39.

Epifanes Fillers	code	tube	750ml	880g	2L
Combi Filler	PATE31X	£8.25		£19.85	
Epoxy Filler	PATE32X		£19.45		£51.80
		[ 7 ]	[ 7 ]	[ 8 ]	[ 2 ]

## ANTIFOULING



**Flag Cruising Antifouling** Copper based antifouling free from booster biocides. This is an economical (cruising grade) self eroding antifouling with proven performance within a wide variety of UK conditions (including freshwater) and many European locations. Suitable for general sailing craft with a top speed of around 8 knots. Proven to create less 'build up' than many traditional antifouling. Theoretical spreading rate 10 sq. metres per litre. Manufactured in the UK. Not suitable for aluminium hulls.

Flag Cruiser Antifouling	size	code	price
Reducer	2.5L	PATFMCX25	£30.91
	1L	PATFMATC1	£8.40



**Seajet Shogun Antifouling** These antifouling regularly win the yachting press awards and they have established themselves as a very popular choice for yachts and motorboats [up to 40 knots]. Recommended for high fouling areas on all types of boats except aluminium. Two coats [three roller coats] will last two seasons. Coverage 8.8 sq metres per litre. Green only in 2.5L.

Black [0013]	Grey [0295]	Mid Blue [6943]	Navy [6094]	Red [2110]	Green [5125]
--------------	-------------	-----------------	-------------	------------	--------------

Seajet Shogun Antifouling	code	750ml	1L	2.5L
Seajet Shogun	PAT691VR XXXX[X]	£25.83		£66.66
Seajet 011 Underwater Primer	PAT251CR043[X]	£13.33		£41.66
Thinners for antifouling/primer	PAT908TRO061		£8.74	
		[ S ]		[ L ]

Replace XXXX with chosen colour code and replace [X] with the size