

TEXTURES & FILLERS

HARD COATINGS

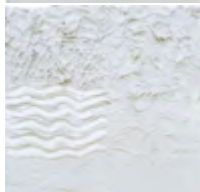
Textures for Styrofoam and Polystyrene Versatile water-based fibre-reinforced coatings for Styrofoam and polystyrene. Application with a trowel is best but they can be diluted with water up to 5% to be applied with a brush; or up to 15% to be applied using Airless Spray Equipment [see page 80]. Clean immediately after use with water. Can be tinted using up to 8% Rosco Supersaturated Paint [page 2]. Very strong. See Page 14 for other Haussmann Coatings.



Haussmann's Foamcoat The good value version of the coating. An excellent choice if you have to cover a large area.

Consumption: Undiluted allow around 1 - 1.8 kg per m².

- ✓ Economical



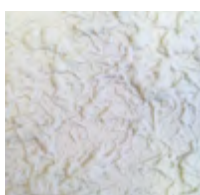
Haussmann's Foamcoat Light This coating uses a new ultra-lightweight mineral extender to reduce weight. When applied to Styrofoam and polystyrene it only slightly increases their weight making it excellent for tours and flown pieces.

Consumption: Undiluted allow around 0.6 - 1.2 kg per m².

- ✓ Good for touring
- ✓ Flown pieces

Spot the difference. The top sample board has been covered with Foamcoat, the board below with Foamcoat Light.

Haussmann's Foamcoat	size	code	price
Off-white	18 kg [approx 10 L]	PAT1075	£105.00
Haussmann's Foamcoat Light	size	code	price
Off-white	12 kg [approx 12 L]	PAT1080	£119.00



Rosco Foamcoat A water-based protective coating for Styrofoam and polystyrene. Rosco Foamcoat has a consistency of wet plaster which dries to a hard durable coating that can be sanded, carved or smoothed. Uses include creating patterns such as bark or stone. Can also be used as a surface coating on fibre glass. This product can suffer slightly from consolidation in the pot and may need some aggressive mixing prior to use. See our Mixers [page 72].

Apply with a gloved hand, stiff brush, trowel or a Hopper Gun [page 79].

Rosco Foamcoat sprayed onto MDF with a hopper gun to get a deep texture.

Rosco Foamcoat	size	code	price
Off-white	3.79 L	ROS60717	£60.75
Off-white	13.26 L	ROS60719	£200.00



Haussmann's Styro-plast This is our replacement for Hardkote which is no longer obtainable. It is a synthetic paste made with a coarse marble sand giving it a granular finish. The texture can be built up to a thick layer without it slumping. Once dry, Styro-plast provides a very tough flame-retardant coating that will withstand substantial knocks without cracking or denting. Apply with a trowel or gloved hand. Consumption: Allow around 1.8 - 2.2 kg per m².

- ✓ Super tough coating
- ✓ Fire-retardant
- ✓ Granular texture finish
- ✓ Large container offering excellent value

Haussmann's Styro-plast	size	code	price
Off-white	20 kg [approx 16 L]	PROSTY1020	£109.00

For power mixing machines and mixing tubs go to page 72 - 73.



Murex - all substrates Exceptional adherence to all substrates including old painted surfaces, glazed tiles, primed wood, brick and even many plastics. Working time 30 minutes at 20°, can be over painted in 24 hrs. It is supplied as a powder for mixing with water.

- ✓ No thickness limitation
- ✓ Can be nailed or screwed into
- ✓ Impact resistant
- ✓ Interior or exterior

Murex	size	code	price
White	2 kg	PROMUR2	£14.60
White	5 kg	PROMUR5	£32.54
White	15 kg	PROMUR15	£69.40

See also Toupret TX110 [page 57] and Plaster of Paris [page 106].



Artex Textured Finish AX The original Artex Textured Finish AX is formulated from selected water-soluble binders combined with inert fillers. It is supplied as a powder for mixing with water. When applied to non-combustible surfaces Artex provides a Class 0 surface in accordance with National Building Regulations. Artex is non-toxic and non-hazardous, however the use of gloves and a dust mask are recommended to prevent irritations. Artex can be overpainted when dry.

Artex AX	size	code	price
White	25 kg	PAT835	£27.80

See also Toupret TX110 [page 57] and Jesmonite Water-based Glass Fibre System [pages 99 - 102].

PLIABLE COATINGS



Rosco Flexcoat is a non-toxic, white water-based coating that is excellent for use as a flexible protective coating over all types of polystyrene and soft foams. It is especially useful on foam scenery and props which require added protection yet need to remain lightweight. It performs well over concrete, primed metal and primed wood.

Flexcoat contains no plasticisers, so it will not become brittle with age or exterior exposure. It is compatible with all Rosco paints used either as tints or surface coatings. Flexcoat can be mixed with rubber and foam granules to provide a strong and flexible bonding agent. It is weatherproof and provides a Class A flame-retardant coating over most substrates.

Rosco Flexcoat	size	code	price
White	3.79 L	ROS6071201	£54.00
White	18.95 L	ROS6071202	£262.65

To build up areas of broken texture why not apply patches of our flame retardant underfelt [page 124].

Have fun and make a mess with the Flickatex machine [page 68]!



Idenden Brushcote 30-150

A thick waterborne co-polymer that provides a durable and flexible texture coating that will not crack or flake. It can be easily applied with a brush, trowel or gloved hand directly to timber, canvas, polystyrene, hessian, vacuum-formed plastics, underfelt and

carpet. Its consistency makes it suitable for a wide range of textured applications, including wood grains, stippling, simulated mud and stone floors etc. When dry it is resistant to flame [BS 476 Part 7 Class 1, Building Regulations E15 Class 0] and most types of chemical attack. Idenden is available in three colours, the white can be coloured using one of the acrylic colour systems, Flints Liquid Pigments [page 20] or our dry pigment powders. It can be made lighter by adding Fillite or Glass Bubbles [page 56]. Health and safety sheets can be downloaded from flints.co.uk. Covers approximately 1 m² per litre resulting in a dry film thickness of 0.5 mm.

- ✓ Good adhesion to difficult surfaces
- ✓ Flame retardant to Class 1 and 0
- ✓ Will not crack or flake
- ✓ Can be tinted or overpainted
- ✓ Thixotropic, will not droop
- ✓ Flexible
- ✓ Durable
- ✓ Water-based
- ✓ Interior and exterior
- ✓ Reliable and easy to use

Got a big texture job? Speed it up with an Airless Sprayer! Hire [page 361] or buy [page 80]

Idenden Brushcote 30-150	code	10 L	10+	Tradeline 20+
White	PAT810	£75.00	£64.48	£60.12
Grey	PAT812	£75.00	£64.48	£60.12
Black	PAT811	£75.00	£64.48	£60.12



Idenden Spraycote ET-150 A slightly thinner product than the popular Brushcote listed above. Spraycote is a soft paste which can be sprayed with an airless system. For best results use airless spray equipment [for hire details see page 361, for purchase information see page 80]. Air texture guns may also be used [page 79] or it can be applied by brush. Spraycote is water-based, flexible, durable and dries to a flame resistant finish [BS 476 Part 7 Class 1, Building Regulations E15 Class 0].

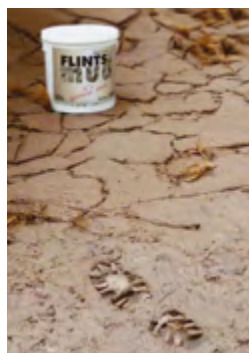
Idenden Spraycote ET-150	code	10 L
White	PAT813	£79.98
Grey	PAT814	£79.98
Black	PAT815	£79.98



Flintex An economical, flexible and flame retardant texture compound which is water-based and can be tinted with any water-based pigment or paint. It is a durable product only marginally less tough than Idenden Brushcote. Ideally suited to theatre scenery and most other projects excepting those needed to endure very heavy traffic.

Adding Fillite [next page] will create a lighter and more economical mix for larger areas. It will be slightly less flexible but will have a more matt finish – good for bricks or York stone on ply. Foam Crumbs [next page] can also be added for more texture. Only available in white. Suitable for interior and exterior use [although adding pigment and texture may effect its weather resistance]. May be applied with airless spray equipment [for hire details see page 361, for purchase information see page 80] SPECIFICATION: Non-flammable when wet and BS 476 Parts 4, 6, 7 Class 0 when dry. Moisture vapour permeability: 0.11 perms. Fungal resistant. Weight: 1.35 kg per L.

Flintex	code	10 L	10+	Tradeline 20+
White	PATFHS810	£55.00	£49.50	£46.00



Flints Mud A thick flame retardant waterborne texture that is perfect for creating stage landscapes. Apply with a gloved hand, trowel, stiff brush or airless spray onto canvas, underfelt, polystyrene or almost any substrate. Flints Mud dries to a tough but flexible finish complying to BS 476 Part 6 and Part 7 Class 0. Cloths textured with Flints Mud can be rolled up for transport. The surface will be resilient enough for use on floors in themed areas. Additional texture such as Foam Crumbs [next page] can be added to the Mud to vary the texture and the colour can be varied by adding concentrated Flints Liquid Pigments [page 20]. It can be smeared into artificial grass to break up monotonous areas. Colour approximately Pantone 4625U. Health and safety sheets can be downloaded from flints.co.uk. Covers approximately 1 m² per litre resulting in a dry film thickness of 0.5 mm.

- ✓ Perfect for theming work in museums or theme parks
- ✓ The slightly soft surface is quiet to walk on and comfortable to sit on making it perfect for opera use

Flints Mud	code	10 L	10+	Tradeline 20+
Mud Brown	PATMUD	£63.00	£56.00	£53.00

WEAVE FILLERS



Weave Filler 916 Weave Filler 916 and 916SE are highly elastic materials for filling open weave textiles from the finest bobbinet to massive one-inch-square architectural nets. The 916SE is the flame retardant version. This well-proven product will flow in one brush stroke to fill the very largest gauzes and nets. Once dry further layers can be applied for added texture. It is best to lay out your gauze onto a floor covered with polythene and dusted with French Chalk to help with the release and to prevent the cloth from sticking to itself when it is rolled for transport. The weave filler remains highly flexible for many years and even at sub-zero temperatures. Can also be used as a non-skid backing to rugs and druggets

[page 28] and as an edge binder to prevent materials from fraying. A very impressive product.

Weave Filler 916	size	code	price
Ecru	1 kg	PROWF9161	£16.38
Ecru	5 kg	PROWF9165	£66.13

Weave Filler 916 SE	size	code	price
Flame Retardant	10 kg	PROWF91612	£157.50

NB: The 916 SE Flame Retardant version can discolour some dark cloths. Please try a sample first.



Weave Filler and Texture 1047 Highly elastic, opaque and suitable for applying thick three-dimensional decoration to all kinds of textiles. 1047 SE is the flame retardant version. Its elasticity is not affected even by freezing temperatures. Custom colours can easily be made by mixing in, or overpainting with Rosco Supersaturated Paints [page 2]. The texture can be applied in a variety of ways including by syringe or pastry cook's decorator bag, otherwise a gloved hand or trowel can be used.

Weave Filler 1047	size	code	price
Buff	1 kg	PROWF10471	£16.66
Buff	5 kg	PROWF10475	£67.00

Weave Filler 1047 SE	size	code	price
Flame Retardant	10 kg	PROWF1047SE	£160.00

NB: The 1047 SE Flame Retardant version can discolour some dark cloths. Please try a sample first.

TRANSPARENT COAT



Super tough stuff!

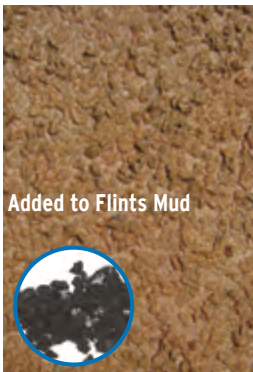


CrystalGel sprayed with Hopper Gun

Rosco CrystalGel A non-toxic, water-based material which provides a clear, plastic-like coating on virtually any surface used on stage. It air dries quickly, usually within hours, to form a flexible translucent surface. When dry it can be painted with Rosco paint. Cloths can be rolled up without cracking, peeling or sticking. Sand, sawdust, or powdered clay can be added to make unique textures. Being clear, CrystalGel is perfect for permanently securing glitter and when splattered onto windows it makes a great rain effect. It will ferociously adhere to glass, plastics, canvas, foam, metal and wood and it is very effective on plexiglass-type materials.

Rosco CrystalGel	size	code	price
	1 L	ROSCG1	£21.45
	3.79 L	ROSCG128	£49.50
	18.95 L	ROSCG210	£216.50

TEXTURE ADDITIVES

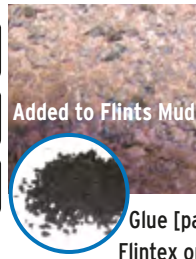


Added to Flints Mud

Rubber Chips Ideal for creating onstage texture and foliage effects. Rubber chips are medium-soft and quiet so they are a good choice of texture for opera scenery. They can be mixed with Flints Texture Binder [page 57] or added to Flints Mud, Flintex, Rosco Flexcoat or even Idenden Brushcote to create the desired effect. Great value. For a flame retardant texture additive see the next column.

Approximate crumb size: 2 mm - 8 mm

Rubber Chips	code	25 kg bag	Tradeline 5+
Black	PROCHIP	£19.95	£12.10



Added to Flints Mud

Foam Crumbs Soft Class 0 flame retardant foam crumbs widely used for creating soft textures. Excellent for hedge foliage and earth effects. Light in weight and very soft underfoot. They can be mixed with Flints Texture Binder [next page], Cyclorama Glue [page 110] or added to Flints Mud, Rosco Flexcoat, Flintex or even Idenden Brushcote to create the desired effect. Supplied black in a choice of three crumb sizes. A 4 kg bag is approximately 3.13 cubic feet.

Foam Crumbs	type	code	Tradeline
up to 4 mm	fine*	PROFCAMEDF*	£68.75
up to 10 mm	medium	PROFCAMED	£68.75
up to 50 mm	chunky	PROFCAMEDL	£68.75

*NB: Fine Foam Crumbs are bought to order with a 10 bag minimum order quantity and a two-week delivery time.



Added to Flints Mud

Micafil [Vermiculite] A naturally occurring inert flame resistant material which can be mixed with Flints Mud, Idenden, Flexcoat or one of the consolidating binders to form a lumpy but lightweight texture. Sparkly appearance. Stocked in two grades. Average particle size: standard approx 5 mm, coarse 10 mm.

Micafil	code	4 cubic ft bag	Tradeline 10+
Standard	PAT836	£25.95	£21.75
Coarse	PAT837	£25.95	£21.75



Fillite A glass-hard, inert, hollow silicate sphere. Fillite is primarily used to reduce the weight of textures or moulding materials. The spherical nature of the material ensures the lowest quantity of binder is needed to wet out the material. When mixed with Flintex or Idenden it will form a good texture for brick or York stone. The mix will be slightly less flexible but with a slightly matt finish.

SPECIFICATION: Average particle density: 600 - 850 g/L. Average bulk density: 350 - 450 g/L. Packing factor: 60% - 65%. Appearance: grey powder. Hardness: Mohs scale 5. Average wall thickness: 5% - 10% of sphere diameter. Melting temperature: 1,200° - 1,350°C. Thermal conductivity: 0.11 Wm - 1K-1. Loss on ignition: 2% maximum. Surface moisture: 0.3% maximum. Crush strength: 105 - 210 kg/cm² [1500 - 3000 psi].

- ✓ Lightweight – reduces the weight of your texture material
- ✓ Spherical – free-flowing
- ✓ Inert
- ✓ Improves flame retardance

Fillite	approx volume [bulk density]	code	price
20 kg	50 L	PRO500SG	£40.95



Glass Bubbles This very lightweight material can be mixed with textures such as Idenden and fillers to form a much less dense texture material. It is one third the density of Fillite. It is of particular use when applying textures to scenic cloths which will rapidly become too heavy using conventional textures. See also Colloidal Silica, Fillite and Micro Fibres [page 104].

SPECIFICATION: Composition: 'C' Glass. Appearance: white. Particle size: 40 - 80 microns. Particle density: 200 g/litre approx. Bulk density: 100 - 150 g/litre approx.

Glass Bubbles	approx volume [bulk density]	code	price
0.3 kg	3 L	FILA230001	£15.98
5 kg	50 L	FILA230003	£145.89

CONSOLIDATING MEDIUMS



Flints Texture Binder

An economical and powerful binder that has been developed to consolidate texture materials such as foam crumbs, rubber chips, Micafil [Vermiculite], sawdust etc. into a scenic coating that will adhere well to most materials and will remain flexible over the long-term.

Always try a small sample first to satisfy yourself that the product is suitable for your particular application. White in the pot but dries clear.

Flints Texture Binder	code	1 L	10 L	Tradeline 10+
Clear	PAT80310	-	£59.00	£49.00
Sample pot	PAT80310S	£9.45	-	

For other consolidating mediums see Flints Cyclorama Glue [page 110]; PVA glues such as Flints Bond [page 111]; Rosco Flexcoat [page 54]; Rosco CrystalGel [page 56] and Idenden Brushcote [page 55].

FILLERS



Can be used as a texture too!

Toupret TX110 This is a rapid-drying filler to replace the old Toupret Rapide. It can be used as thick as you like, as a filler or texture. It will be set after 40 minutes [at 20°] and ready to rub down or overcoat in less than 3 hours. It will adhere to glazed ceramic tiles, old painted surfaces, brick, stone, primed timber, concrete etc. Once dry it can be screwed or nailed into. Interior use only. See also Murex [page 54] and Plaster of Paris [page 106].

Toupret TX110	size	code	price
Off-white	2 kg	PAT8322	£10.51
Off-white	5 x 1 kg	PAT8325	£19.05
Off-white	10 x 1 kg	PAT83210	£29.44



Isopon P38 Body Filler A two-part polyester-based filler, designed as a standard-grade professional car body filler but suitable for most filling tasks. It is also widely used in model-making. Dries quickly and gives a very smooth finish. Comes complete with hardener but extra can be bought separately.

Isopon P38	code	600 ml	code	1.2 L	code	2.25 L	code	3.5 L
Grey	FIL136	£14.02	FIL137	£25.88	FIL138	£39.55	FIL139	£52.38

P38/P40 Hardener	size	code	price
Red	19.5 g tube	FIL140	£2.79



Big Smooth Easy One A hugely popular, creamy, very easy to sand, two-part polyester body filler which will not shake loose. It is extremely lightweight and the easiest U-Pol filler to sand. Will adhere to steel, GRP, wood, aluminium etc. Dries pink-grey.

Big Smooth Easy One	code	list	3.5 L	Tradeline 3+
Grey	FIL194	£36.88	£31.80	£28.62



Love it!

FEW Filler [Fine Elastic White] A very fine-particle filler intended for surfacing work on metal, GRP, plywood and other fillers, prior to spraying. The filler is white in colour and the hardener is red, to aid mixing. The final colour being slightly tinted white. The dense finish generally requires no priming prior to topcoat application making it a great choice for final imperfections. [20 min cure].

FEW Filler [Polyester]	size	code	price
Blush white	1.5 kg	PRO9136	£19.60



Terraco Handycoat Interior Handycoat Interior is a multi-purpose, ready-mixed, interior skimming, jointing and patching compound which bonds extremely well to cementitious materials, gypsum based substrates and boards, sprayplaster, wood and all common types of building surfaces. We think its particularly good for skimming joints between flats in exhibition spaces for a really clean finish. Consumption: Undiluted allow around 0.5 - 1.5 kg per m².

- ✓ Excellent adhesion
- ✓ Can be applied up to 4 mm thickness
- ✓ Quick drying and no shrinkage
- ✓ Natural finish which doesn't flake off
- ✓ No need for primer or sealer
- ✓ Good for skimming joints

Terraco Handycoat Interior	code	price
5 kg	PAT631100	£10.85



Isopon P40 Repair Kit A very useful polyester paste with glass fibres for bridging holes on steel [such as rust holes], most types of metal or GRP etc. Isopon P40 forms a very hard durable surface and can be sanded and shaped if required. It is easily covered with standard polyester filler [see above] or can be overpainted directly. See page 103-106 for more Glass Fibre products.

Isopon P40	size	code	price
	600 ml	FIL143	£23.53



Polyfilla The decorator's traditional filler. Powder mixed with water. A slower drying filler.

Polyfilla	size	code	price
Off-white	450 g	FIL160	£2.38
Off-white	900 g	FIL161	£3.68
Off-white	1.8 kg	FIL162	£6.97



Fine Surface Polyfilla A convenient tube filled with very fine ready-mixed super smooth filler for a perfect blemish-free finish. Also widely used by art restorers to repair damaged artwork.

Fine Surface Polyfilla	size	code	price
Off-White	400 g	FIL165	£4.14

For black sand, marble dust and other powders see page 25.