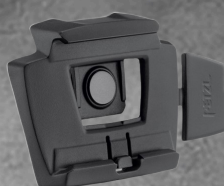


# HEAD TORCHES

## HEADLAMP TORCHES

Essential kit for working backstage especially during lighting rehearsals. Frees up both hands allowing you to concentrate on the job and hang on to the ladder. The light source is close to your eyes ensuring the beam is thrown just where it is needed. Also handy for cycling home and outdoor pursuits. All our head torches are individually tested and have a three year guarantee.

Aria 1 Black RGB 350 Lumens Headlamp



Helmet Mounting Plate for ARIA Head Torch

Aria 1 Blk/Yell 350 Lumens Headlamp



### Petzl ARIA

Newly designed headtorch range from Petzl, bright head torches with a long battery life and impressive list of features for such lightweight, compact headlamps. Available in Black/Yellow ARIA 1 & 2 white light only or ARIA RGB 1 & 2 in Red/Green/Blue or White Light. See table below for performance comparison.

NEW

- Impact resistant to IK07
- Fall resistant up to 2 metres
- Dust proof & waterproof
- 3 lighting power levels: MAX BURN TIME (battery saver), STANDARD & MAX POWER
- Adjustable angle of beam
- Battery charge indicator
- Removable, washable head band that adjusts for perfect fit
- Can also be used with the SLOT ADAPT to clip directly to your helmet
- RGB versions have Red, Green or Blue lighting (continuous or strobe)

All black RGB torches are ideal for military use and theatre workers alike. These headlamps have red, green & blue light settings in addition to the standard white light. We're not sure how much use the coloured lights would be backstage, but we understand that the red light is good for maintaining night vision, red & green don't spook deer and blue is great for cutting through fog and detecting blood.....

SLOT ADAPT is a plate for mounting ARIA headlamps on a VERTEX or STRATO

ARIA 1: Lighting performance as defined by the the ANSI/PLATO FL1 Protocol				
Lighting Colour	Lighting Levels	Brightness	Distance	Burn Time
White	Max Burn Time	7lm	10m	110h
White	Standard	100lm	45m	12h [7h with core]
White	Max Power	350lm [450lm with core]	70m	2h

ARIA 2: Lighting performance as defined by the the ANSI/PLATO FL1 Protocol				
Lighting Colour	Lighting Levels	Brightness	Distance	Burn Time
White	Max Burn Time	7lm	10m	100h
White	Standard	100lm	60m	10h [7h with core]
White	Max Power	450lm [600lm with core]	100m	2h

ARIA 1 RGB: Lighting performance as defined by the the ANSI/PLATO FL1 Protocol				
Lighting Colour	Lighting Levels	Brightness	Distance	Burn Time
White	Max Burn Time	7lm	10m	110h
White	Standard	100lm	45m	12h [7h with core]
White	Max Power	350lm [450lm with core]	70m	2h
Red/Green/Blue	Continuous	4lm	5m	50h
Red/Green/Blue	Strobe	Visible at 700m for 300h		

ARIA 2 RGB: Lighting performance as defined by the the ANSI/PLATO FL1 Protocol				
Lighting Colour	Lighting Levels	Brightness	Distance	Burn Time
White	Max Burn Time	7lm	10m	100h
White	Standard	100lm	60m	10h [7h with core]
White	Max Power	450lm [600lm with core]	70m	2h
Red/Green/Blue	Continuous	4lm	5m	50h
Red/Green/Blue	Strobe	Visible at 700m for 300h		

code	description	price
PETE069AA00	Aria 1 Blk/Yell 350 Lumens Headlamp	£28.00
PETE069BA00	Aria 1 Black RGB 350 Lumens Headlamp	£32.00
PETE070AA00	Aria 1 Blk/Yell 450 Lumens Headlamp	£41.00
PETE070BA00	Aria 1 Black RGB 450 Lumens Headlamp	£44.00
PETE073BA00	Helmet Mounting Plate for ARIA Head Torch	£6.00

Pixa 450 Lumens  
Headlamp



## Petzl Pixa

Newly designed Pixa headlamp is now much more compact and but still the top of the Petzl headlamp range for function and durability. There are now 2 headlamps in the Pixa range standard Pixa which takes 3 x AAA batteries or CORE battery and Pixa R which takes a CORE PRO battery only.

NEW

- Impact resistant (IK08),
- Fall resistant (up to 2 meters)
- Crush resistant (up to 80 kg)
- Dustproof and waterproof in up to 2 meters of water for 1 hour (IP68)
- Resistant to certain chemicals
- CONSTANT LIGHTING technology means that the brightness of the lamp does not wane as the battery runs down.
- Wide, uniform beam for close-range work
- Two mixed beams for moving
- Focused beam for distance vision
- 10-second BOOST mode can be used at any time for the occasional need for maximum brightness
- Single rotating selector knob controls all functions and can be used while wearing gloves
- Plate allows you to tilt the lamp up or down
- Battery charge indicator allows the user to quickly see the battery level each time it is turned on or off
- Pixa R can be recharged without removing the battery, via three external charging contact points (charging cable included)
- CORE PRO battery is removable, so it can be recharged externally and switched out in order to continue working
- The SLOT ADAPT plate, included with the headlamp, makes it easy to install on a Petzl professional helmet with a slot

Pixa comes with three AAA/LR03 batteries.

Pixa R comes with its CORE PRO rechargeable battery (1250 mAh / 3.6 V / 4.5 Wh)

Pixa Lighting Performance					
Lighting Technology	Lighting Modes	Beam Type	Brightness	Distance	Burn Time
Constant Lighting	Close-Range Work	Wide	35lm	10m	12h
Constant Lighting	Movement	Mixed	60lm	25m	6h
Constant Lighting	Rapid Movement	-	145lm	40m	2h
Constant Lighting	Distance Vision	Focussed	140lm	50m	-
Boost	-	Mixed	450lm	80m	10 seconds

Pixa R Lighting Performance					
Lighting Technology	Lighting Modes	Beam Type	Brightness	Distance	Burn Time
Constant Lighting	Close-Range Work	Wide	45lm	15m	12h
Constant Lighting	Movement	Mixed	90lm	30m	6h
Constant Lighting	Rapid Movement	-	250lm	50m	2h
Constant Lighting	Distance Vision	Focussed	-	65m	-
Boost	-	Mixed	600lm	90m	10 seconds

code	description	price
PETE20AA00	Pixa 450 Lumens Headlamp	£53.00
PETE20CA00	Pixa R 600 Lumens Headlamp	£80.00
PETE31AA00	Charging Cable for Petzl CORE PRO	£14.50
PETE32AA00	CORE PRO Rechargeable Battery	£34.00

# HEAD TORCHES / HAND TORCHES



## Petzl E+Lite®

Ultralight and very compact, the e+LITE® emergency headlamp should always be with you. Ready to use in its neat storage case, it can be stored with its batteries for 10 years in a vest or an emergency kit, etc. Its white or red, continuous or strobe lighting allows you to be seen and to signal an emergency.

White close range work mode [15 lumens up to 6 m] allows you to move around easily in the dark.

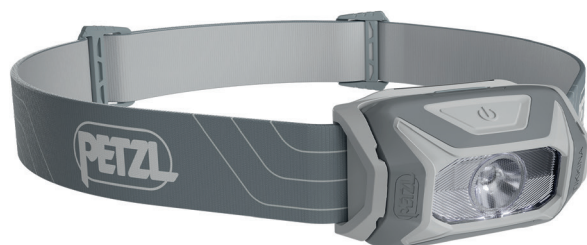
For emergency situations, the red LED allows you to be seen from a distance [100 m for 15 hours, or in strobe mode 100 m for 70 hours].

Locking on/off switch designed to prevent accidental operation.

Resists extreme temperatures: -30 °C to +60 °C.

Waterproof up to a depth of 1 m for 30 minutes, IPX7. Operates on 2 lithium CR2032 batteries [included]. Certification: Certified CE, ATEX [Ex II 3 GD Ex in IIC T6, Ex tD A22, IP 68 T85°C].

code	weight including batteries	price
PETE02P4	26g	£24.00



## Petzl Tikkinä®

An excellent everyday headlamp with a wide beam and three lighting modes. At maximum brightness [300 lumens] the headlamp has a range of 65 m and burns for 2 hours. Max burn time mode [7 lumens] has a range of 10 m and a burn time of 100 hours. Grey.

- Single push button for quick lighting mode selection
- Washable elastic headband that's easily adjusted
- Easy open battery case for fast battery changes

Water resistant for all-weather use IPX4. Battery compatibility: 3 x AAA/LR03 batteries [included] or CORE rechargeable battery [sold separately - see above]. Five-year guarantee.

code	weight including batteries	price
PETE060AA00	92g	£20.00

## Petzl Core Battery

Large capacity Li-Ion 1250 mAh rechargeable battery for use with the Tikkinä® and the Tactikka®. Universal charging via the integrated USB port [cable included]. Charging indicator displayed on the battery.



code	price
PETE99ACA	£24.00

## HAND TORCHES

Hand torches have greatly improved in the last decade. With reliable LED technology it is possible to incorporate powerful beams into much smaller torches. However, LED technology isn't simple. We have tested torches that completely failed after relatively short periods, some LEDs cause radio interference, others start flickering. We hope that the ones we have listed will provide you with long-lasting and impressive service. Sadly, there is no magic involved. More Lumens means more energy and a shorter battery life, although improvements in batteries is helping here. You will need to decide when you are most likely to need a torch and what for. Sometimes a dull torch is better if you need to illuminate a working drawing, script or map as it will help to preserve your night vision. If you are on event security patrol a really powerful beam will help. You need to decide if you will carry it on your belt or in your pocket? Do you really need a strobe? Hopefully, you will find your perfect torch here.

### Ideal Small Inspection torch



#### LED Lenser® P4 Core

Slim pen like torch which is ideal for engineers and technicians made from aircraft grade aluminium. Water Resistant to IP54. Three power modes:

- Low Power – 15 lumens; 25 meters for 20 hrs;
  - Mid Power – 60 lumens; 55 meters for 9 hrs;
  - Standard Power – 120 lumens; 90 meters for 5 hrs
- Comes With: 2 x AAA Batteries & Pocket Clip

code	description	price
LEDP4C	P4BM	£25.00



#### LED Lenser® P5 Core Torch

Compact, Powerful Lightweight Torch with three power modes:

- Low Power – 15 lumens; 30 meters for 12 hrs
- Mid Power – 60 lumens; 60 meters for 5 hrs
- Standard Power – 150 lumens; 90 meters for 2.5 hrs

- Convenient pocket size and light weight
- One-handed on/off button. A really useful feature
- One-handed push speed focus
- Single AA battery. Keep a spare in your pocket, it is a better solution than having both go flat in the torch
- 140 lumens giving a stunning 120 m beam!
- Suitable for use down to -20°C
- Gold-plated contacts

Weight 83g. Water resistant to IP44

Supplied with: 1 x AA Battery & Wrist Strap

code	description	price
LEDP5C	P5 in belt pouch	£39.90

