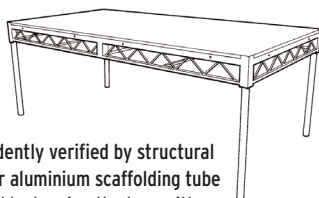


Flints has over thirty years of experience in supplying and hiring staging systems. Unlike the individual manufacturers, we can offer impartial advice on all makes of staging including RATstands' SpeedDeck, Doughty's Easydeck and the aluminium Nivoflex systems, as well as the Steeldeck and Stagebase we list below. Requirements vary widely, from systems that can be handled by school children to decks that can withstand the rigours of touring. Flints can offer independent advice so that you get the system best suited to your needs.

STEELDECK

Steeldeck

The most popular staging system used in theatres. It is strong, quick to rig, and easy to handle. The decks that we supply are the original Steeldeck invented by Philip Parsons in 1986. The load capacity has been independently verified by structural engineers. The Steeldeck rostra uses steel or aluminium scaffolding tube for legs. Complex structures can be designed by bracing the legs with standard scaffolding components. Tiered seating can be accomplished by overlapping the units. Units can be wheeled by purchasing a set of scaffold castors. These wheeled units make handy storage trolleys for storing your decks and are widely used for shifting heavy gear during theatre get-ins. There are endless ways to use Steeldeck from rock concerts, choir tiers, raked stages and Santa's sleigh to banqueting tables and production desks. Overall height of deck including top is 180 mm. Steeldeck is rated at 7.5 kN/m². The frames are painted black but the tops are unpainted plywood. See page 10 for Flints Theatre Black Paint or have them painted – see price option below.



code	description	length	width	price
Standard Steelback [Imperial]				
SD84		8ft	4ft	£528.00
SD84F	Frame only	8ft	4ft	£393.00
SD83		8ft	3ft	£486.00
SD82		8ft	2ft	£411.00
SD64		6ft	4ft	£486.00
SD44		4ft	4ft	£437.00
SD33		3ft	3ft	£308.00
Standard Steelback [Metric]				
SDM21		2m	1m	£486.00
SDM11		1m	1m	£345.00
Top Options				
P1136	To paint tops with black emulsion			£8.00

Stagebase

Stagebase is a staging system similar in principle to the famous Steeldeck but with a much simpler construction. The maximum size of these units is 2 m x 1 m making them perfect for the smaller venue. At 120 mm deep the units take up less storage space than Steeldeck. This system is a great choice for clients who want all the versatility of Steeldeck but at less cost. Stagebase is rated at 5 kN/m². A 2 x 1 m unit weighs 40 kg. For leg prices see other column.

✓ Lighter to move and easier to store

✓ Economical solution with no compromise to performance.

The system could not be simpler – just choose your Stagebase units then select your leg heights from the section below.



code	description	price
P1028	2 m x 1 m with plain ply top	£363.00
P1029	1 m x 1 m with plain ply top	£271.00
P1035	2 m x 1 m frame only – no top	£265.00
P1036	1 m x 1 m frame only – no top	£215.00
Top Options		
P1136	To paint tops with black emulsion	£8.00

LEGS

Legs

We list a selection of the most popular leg heights which we sell as sets of four. Each leg will have a plastic insert in one end and comes in steel or aluminium. Legs can be cut to any height. For tube cutting prices visit page 248.

To achieve a certain overall deck height, the legs need to be shorter by the following amounts:

Steeldeck 30 mm* Stagebase 30 mm*
Megadek® 33 mm* SpeedDeck 28 mm*

*These measurements allow for the 5 mm used by the plastic insert. When ordering please make it clear whether the dimension you give is the overall deck height, the leg height including the end stop or the actual tube cut length.

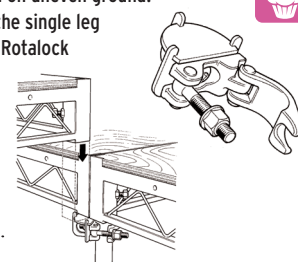
code	Material	height up to	price
SCFLG1	steel	up to 305mm [1ft]	£15.60
SCFLG2	steel	305-610mm [2ft]	£27.26
SCFLG3	steel	610-915mm [3ft]	£38.70
SCFLG4	steel	915-1220mm [4ft]	£50.14
SCFLG1A	aluminium	up to 305mm [1ft]	£18.64
SCFLG2A	aluminium	305-610mm [2ft]	£32.90
SCFLG3A	aluminium	610-915mm [3ft]	£47.20
SCFLG4A	aluminium	915-1220mm [4ft]	£61.46

Multi-Leg Adapter

This can be used where four legs would normally meet allowing just one leg to be used. This provides two major advantages. Firstly, one adjustable foot can be utilised allowing the staging to be used on uneven ground.

Secondly, cross bracing can be clamped onto the single leg with traditional scaffolding clamps. [Although Rotalock will work with clustered legs, see page 253]. Designed to fit standard Steeldeck.

code	price
SDMLA	£33.00



Adjustable Scaffold Foot

Useful for levelling staging legs on uneven ground such as thrust stages landing on raked auditorium floors. When used outdoors on soft ground they are best mounted on scaffold boards. If you have a cluster of legs together why not buy a Multi Leg Adapter above. They allow just one leg to drop to the floor while supporting four rostra corners. Also see Rotalocks [page 253].

code	weight	overall height	adjustable height	base	price
SCFI40	2.1kg	310mm	210mm [+/-10%]	150mm ²	£15.00

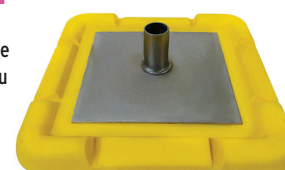


Scaffold Base Plate

Reduces point loading, prevents damage to floors and can be fixed in place to avoid scaffold legs being shunted out of position. They are not pretty, but they are cheap. Fits both Size 6 and Size 8 tubes.

Scaffold Base Plate Protector

Made from hard plastic they are designed for use under the Scaffold Base Plate and Adjustable Scaffold Foot to protect floors from damage. You can't miss them – they're bright yellow.



code	description	weight	base	price
SCFI19	Base plate	304g	150 x 150mm ²	£1.32
SCFI21	Base plate protector	161g	220 x 220mm ²	£1.95

ACCESSORIES

Scaffold Castors & Conversion Sleeve

Flints stocks the versatile plug type scaffold castors which are suitable for converting steel rostra into slave trucks [with the addition of a short scaffold sleeve if going directly into the rostra corner post]. Fitted with strong nylon wheels [N.B. These may be supplied red]. Has a safe working load (SWL) of 535 kg.

NB: Due to manufacturing tolerances on the plug and the tube, the castor can sometimes be a slack fit.



the 125mm braked castor



the 150mm braked castor

code	Type	price
CAS316	125 mm nylon castor with brake	£44.74
CAS317	150 mm nylon castor with brake	£56.36
SCF092	Conversion sleeve	£1.10

Bolts

You'll be stuffed without these! Perfect for Steeldeck. For more bolts see page 281.

code	size	length	box qty	price	100+
FIX7610Z	M10	65mm	100	£0.23	£0.19

STEELDECK GUARD RAILS

Steeldeck Guard Rails

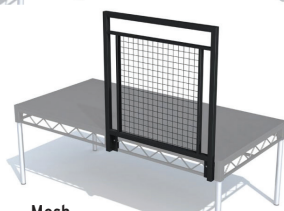
These units are available in three styles: an open handrail, a handrail with mesh or a balustrade type handrail. They are designed to fit Steeldeck only.



Open



Balustrade



Mesh

code	Type	width	price
P1037	Open	4ft	£141.00
P1038	Open	3ft	£129.00
P1039	Open	2ft	£111.00
P1041	Mesh	4ft	£178.00
P1042	Mesh	3ft	£166.00
P1043	Mesh	2ft	£154.00
P1045	Balustrade	4ft	£203.00
P1046	Balustrade	3ft	£185.00
P1047	Balustrade	2ft	£166.00

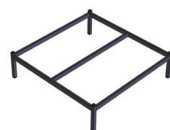
EASYDECK

EasyDeck

is a modular performance system suited to the smaller venue. It is a "no fuss" system, which is simplicity itself to install and requires no special tools to assemble.

- ✓ No tool assembly
- ✓ Easily managed by one person
- ✓ Reversible deck panels from a renewable source
- ✓ Black powder-coated finish
- ✓ SWL 500 kg per m² 4.1 m and 750 mm square options
- ✓ Conforms to DIN 53799, BS 6566:1985, BS 3755:1964 and are made in accordance with ISO 9001:1994 quality assurance systems.

NB: Panels are sold separately to the frames. For the full range see flints.co.uk



Standard Frame DOUT76000



Triangular Frame DOUT76300



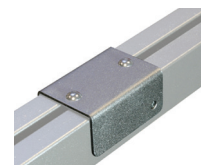
Step Unit DOUT76507



Handrail DOUT76900



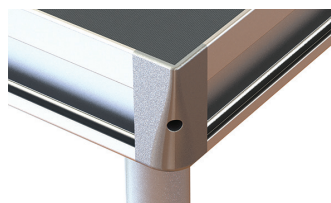
Joint Clip DOUT77500



Joint Channel DOUT77600

code	Type	frame size	height	weight	price
DOUT76000	Standard	1m	250mm	7.57kg	£178.14
DOUT76100	Standard	1m	500mm	8.74kg	£188.67
DOUT76200	Standard	1m	750mm	9.91kg	£199.11
DOUT76250	Standard	1m	1m	10.52kg	£211.83
DOUT76300	Triangular	1m	250mm	5.28kg	£170.28
DOUT76400	Triangular	1m	500mm	6.15kg	£178.14
DOUT76500	Triangular	1m	750mm	7.02kg	£185.99
DOUT76505	Single Step		250mm	4.28kg	£92.60
DOUT76506	Double Step		500mm	8.7kg	£282.93
DOUT76507	Treble Step		750mm	15.89kg	£341.84
DOUT76600	Deck Panel 1m x 1m			7.57kg	£130.99
DOUT76700	Deck Panel 1m Triangular			5.28kg	£83.84
DOUT76800	Deck Panel for each step			4.28kg	£47.11
DOUT76900	Handrail		800mm	4.02kg	£99.56
DOUT77000	Corner Handrail			3.26kg	£104.78
DOUT77300	Chair Stop			1.68kg	£31.44
DOUT77500	Joint Clip			0.1kg	£4.40
DOUT77600	Joint Channel [to join rails together]			0.14kg	£4.60
DOUT77650	Support Channel [to level boards]			0.1kg	£4.60
DOUT77400	Storage Dolly			9.51kg	£252.07

SPEEDDECK BY RATSTANDS



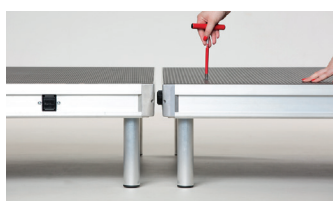
Smoothed out corner joints



Corner brackets have a cam locking system



Speedlock in the engaged position



Speedlock key that makes it all so special

SpeedDeck

The ideal solution for indoor and outdoor staging! This is our lightest staging solution, so it's easy for professionals or novices to move around. Very simple and quick to build and dissemble.

The Speedlock system allows you to quickly fit decks together in any configuration without grotting around underneath, and it can be done by anyone without the need for heavy tools - just 1 key is required!

It offers a steady stage which can support a weight of 5 kN/m [see the full spec below]. Available in 1 x 1 m or 2 x 1 m per piece of deck, it takes standard sized scaffold legs 48 mm Ø - go for aluminium to keep the system really lightweight, and finish with a 5 mm cap. We can supply legs to your desired height - see page 395, or alternatively look at page 248 for Black Anodised Scaffold Tube for a super swanky finish.

SpeedDeck is especially perfect for venues where there may be limited storage space or when the stage needs to be disassembled after every performance with a quick turn-around.

SPECIFICATION: Aluminium frame. 18 mm birch plywood platform. Diecast aluminium corners. Finishes available: Black phenolic hex pattern, clear varnish, black varnish, carpet. Legs should be cut 28 mm shorter [this allows for the 5 mm cap] than the finished height of the stage. So for a height of 1,500 mm the legs should be 1,472 mm. Accessories: handrails, chair stops, locating bracket, skirting and skirt hooks, modular stairs, fixed stairs, ramp, fascia hangers, trapdoor, grill. Max uniformly distributed weight: 7.5 kN. Max point load [on 0.5 x 0.5 m square] in middle: 2.4 kN. Max point load [on 0.5 x 0.5 m square] along edge: 3.6 kN. Stacking height: 97 mm. Max height without diagonal bracing when loaded with 7.5 kN/m²: 1.2 m. Handrail loading: 0.25 kN - 3 kN.

NB: This is a lightweight deck more suited to a corporate environment than standard theatre decking like Steeldeck.

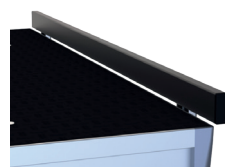
code	description	weight	price
RATS140Q02	1 x 1 m Platform	22kg	£469.00
RATS140Q01	2 x 1 m Platform	37kg	£685.00
RATS140Q05	Speedlock Key [New Type]		£23.00



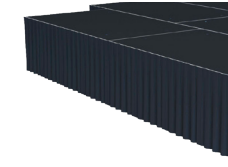
Handrails



Stairs



Chairstops



Dimalan Skirt

Storage Trolleys



SpeedDeck Accessories

We list a wide range of SpeedDeck Accessories below, but for legs see page 395.

N.B the trolleys take up to 6 platforms stored vertically. The converting castor allows a single SpeedDeck Platform to become a dolly and carry up to 15 platforms.

Handrails	description	price
RAT141Q11	Handrail with chairstop [1 m]	£144.00
RAT141Q23	Corner socket for handrail	£190.00
RAT141Q24	Edge socket for handrail (LH)	£101.00
RAT141Q25	Edge socket for handrail (RH)	£101.00
Stairs		
RAT145Q1S1	Stair for 300 mm high stage	£812.00
RAT145Q1S2	Stair for 600 mm high stage	£1,145.00
RAT145Q1S3	Stair for 900 mm high stage	£1,370.00
Chair Stop [1m edge length]		
RAT112Q21	Chair stop	£99.00
Dimalan Skirt [1m length inc. skirt hooks]		
RAT108Q0300	for 300 mm high stage	£55.00
RAT108Q0600	for 600 mm high stage	£75.00
RAT108Q0900	for 900 mm high stage	£85.00
Linking Accessories		
RAT146Q0300	Ramp for 300 mm high stage	£1,665.00
RAT146Q0600	Ramp for 600 mm high stage	£4,348.00
RAT146Q0900	Ramp for 900 mm high stage	£5,400.00
RAT117Q21	Starter ramp	£175.00
RAT143Q02	Ramp connector	£10.00
RAT143Q01	Edge Connector	£17.00
RAT119Q21	Gap filler for convex ramp	£42.00
RAT115Q21	Leg joining clamp	£46.00
Storage Accessories		
RAT107Q21	Trolley for 2 x 1 m SpeedDeck	£935.00
RAT107Q22	Trolley for 1 x 1 m SpeedDeck	£835.00
RAT107Q12	Converting Castor	£84.00