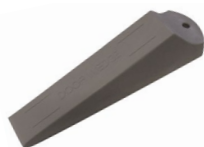


BRAKES

Choice of Brakes

When braked castors are not feasible due to poor access we have a selection of separate brake units. For light trucks, a door stop with a rubber foot or even a rubber door wedge will often suffice. If positioning is crucial [and you can drill into the stage floor] then drop bolts work well. Sometimes it is worth considering not using castors and brakes but gluing carpet to the base of the truck with the pile facing downwards. This will slide easily across painted stage floors but will not need brakes. It is ideal for quietly moving furniture on carpeted ply panels. The problem is that we don't sell plywood or carpet so we wouldn't really recommend this method at all. Heavier trucks can be quickly braked by using one of the lever brakes that we stock. The action of the lever will raise the truck slightly which can cause some visible movement. Using "Wind Down" brakes will be less jerky with the added advantage that they can gently raise heavy trucks so that bolt holes align. A more positive braking action can be achieved by raising all the castors using Unijacks [page 248]. The truck frame will then sit firmly on the stage thus spreading the load. In the scene dock, heavy chain placed around castors will effectively stop any movement. Onstage the quieter Sausage Weight Bags [page 154] can be used.

SIMPLE DOOR STOPS

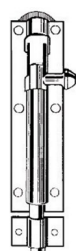


Rubber Door Wedge Cheap quiet low budget solution. Drilled for lanyard. If you buy half a dozen you will be able to retrieve all those stage weights currently being used to hold open the backstage doors.

Rubber Door Wedge	code	price
	DOR050	£2.30

1 m Lengths of Black Chain A length of chain wrapped around the wheel will effectively prevent even heavy trucks from moving. Only suitable when access to wheels is good and the noise of chains is acceptable. These chains are black japanned. See also Sausage Weight Bags [page 154].

1 m Lengths of Black Chain	MRL	code	price	15 m+
link size: 6 x 33 mm	140 kg	WIR833	£5.77	£5.20



Straight Drop Bolts - Tower Bolts Useful for locating lightweight trucks in preset positions.

Straight Drop Bolts	code	price
4"	DOR110	£1.76
6"	DOR111	£2.18
8"	DOR112	£3.14



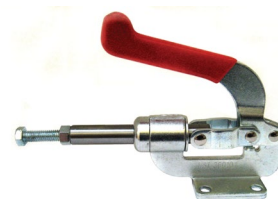
Door Stops Good quality units ideal for lightweight trucks. Fitted with a rubber foot. Screws included.

Small type SPECIFICATION: Backing plate: 119 x 25 mm. Raised foot remains 11 mm below plate, lowered 39 mm below max. Fixings: 3 off No.8 [4 mm] csk screws included.

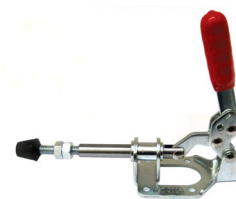
Large type SPECIFICATION: Backing plate: 179 x 38 mm. Foot raised remains 6 mm below backing plate, lowered 40 mm below max. Fixings: 3 off No.8 [4 mm] csk screws included.

Door Stop Type	code	price
Small type	DOR030	£9.75
Large type	DOR031	£14.85

LEVER-TYPE TRUCK BRAKES



Heavy-duty Lever [3/8" thread]



Light-duty Lever [5/16" thread]



Medium-duty Lever [5/16" thread]



Medium/Light-duty Foot [5/16" thread]

Heavy-duty Foot [3/8" thread]



Lever Truck Brakes These popular brakes have a powerful smooth action to push down the plunger and raise the truck. The threaded foot fitting allows the final height to be adjusted and then locked off. You can buy the lever action without the extension feet so that you can have the option of fitting your own plate, disc, or castor. They also make excellent levers for production assembly jigs.



Lever Truck Brakes	movement	max load	code	price	10+
Heavy-duty lever	40 mm	362 kg	CAS74550	£29.95	£22.95
Heavy-duty foot		362 kg	CAS74555	£4.40	£3.90
Medium-duty lever	30 mm	135 kg	CAS74510	£21.89	£14.85
Medium-duty foot [also fits light]		135 kg	CAS74515	£3.79	£3.30
Light-duty lever includes foot	45 kg		CAS745302	£15.25	£13.65



Floor Lock Excellent smooth powerful action. The unit bolts under the truck with its lever protruding through the back. The foot will cant to take up uneven floor surfaces.

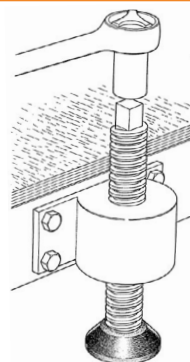
SPECIFICATION: Mounting height: 150 mm. Retracted height: 125 mm.

Floor Lock	load capacity	code	price
	2,000 kg	CAS701	£52.58

TRIPLE E UNIJACKS

See page 248 for the popular Triple E Unijack Brakes.

WIND DOWN BRAKES



Wind Down Brake A superb industrial-quality brake for heavy trucks. Rapid descent with just four turns to drop 25 mm. These brake units will not jerk the scenery when it is positioned in view of the audience. They can be used to anti-rake touring scenery to fit a variety of stages. Useful to level-up large trucks on uneven stage floors and to raise heavy units from the floor to access pallet handling equipment. Fitted with a square head to fit a 19 mm socket and a black nylon foot with

a bronze bush. All parts replaceable. Design right applies.

SPECIFICATION: Overall height: 240 mm. Movement range: 135 mm. Fixing Plate: 60 x 150 x 8 mm thick. Drilled for 4 off M10 bolts.

Wind Down Brake	code	Tradeline
	FHS080	£185.00
Spare foot	FHS080F	£33.37